

205

## OGEMAW COUNTY EMERGENCY PROCEDURES

### SEVERE WEATHER / TORNADO SHELTER

In the event of severe weather the following procedures will be followed, to help insure the safety and well being of the personnel in the County Building.

Severe weather can and does occur at anytime, though usually during the months of April to August. Severe weather may be announced by several different watches or warnings. Everyone should read and understand the different watches and warnings, knowing and understanding the different watches and warnings can help save your life later.

**SEVERE THUNDERSTORM WATCH** - This means conditions are favorable for Thunderstorms to develop in the posted areas.

**SEVERE THUNDERSTORM WARNING** - This means that a strong, severe Thunderstorm has been indicated on radar and is moving into the posted warning area.

**TORNADO WATCH** - This means that conditions are favorable for Tornadoes to occur in the posted watch area.

**TORNADO WARNING** - This means that that a Tornado has been indicated on radar or it has been spotted by observers in the posted warning area. **SEEK SHELTER NOW**

In the event of a Thunderstorm / Tornado Watches it advisable to just be aware of the days weather. If a Watch gets upgraded to a Warning then it is time to act. During a Severe Thunderstorm Warning you should; Stay indoors and away from windows, Do not use electrical machines / appliances, Do not use telephones. In the event of a Tornado Warning (*this means a Tornado has been spotted*) you should take shelter immediately in the lowest level or interior room of a building or home. In the County Building learn where the designated shelter areas are and how to get to them quickly. Knowing this could save your life when an actual Tornado occurs.

# Tornado Safety



Published by: Emergency Management Division

## TORNADO WATCH AND WARNING ..... DO YOU KNOW THE DIFFERENCE ?

### WATCH:

A Tornado Watch is issued to alert people to the possibility of tornado development in your area.

### WARNING:

A Tornado Warning is issued when a tornado has actually been sighted or is indicated by radar.

## TORNADO MYTHS

**Myth:** Areas near rivers, lakes and mountains are safe from tornadoes.

**Fact:** No place is safe from tornadoes.

**Myth:** The low pressure with a tornado causes buildings to "explode" as the tornado passes overhead.

**Fact:** Violent winds and debris slamming into buildings cause the most structural damage.

**Myth:** Windows should be opened before a tornado approaches to equalize pressure and minimize damage.

**Fact:** Opening windows allows damaging winds to enter the structure. Leave the windows alone; instead, immediately go to a safe place.

**Myth:** Tornadoes are always visible from a great distance.

**Fact:** Tornadoes can be hidden in heavy rainfall or nearby low hanging clouds.

# TORNADO PREPARATION

Each tornado season review with your family the area in the home that is designated as the shelter, and practice having everyone in the family go there in response to a tornado threat.

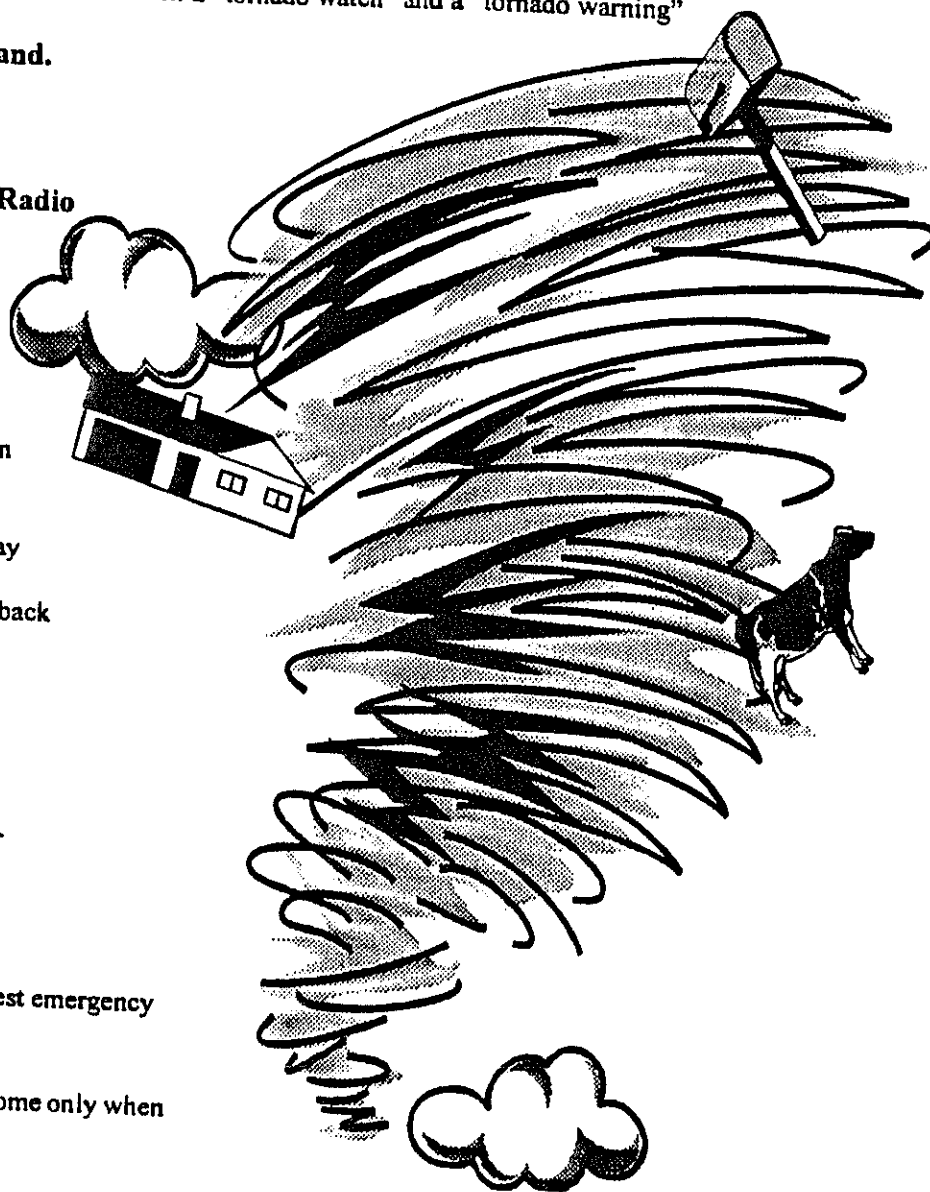
Discuss with family members the difference between a "tornado watch" and a "tornado warning"

**Have a disaster supplies kit on hand.**

**This kit should include:**

Flashlight  
Extra Batteries  
Battery Operated Radio  
First Aid Kit  
Can Opener  
Canned Food  
Bottled Water  
Extra Clothes

Develop an emergency communication plan in case family members are separated from one another during a tornado (a real possibility during the day when adults are at work and children are at school), have a plan for getting back together.

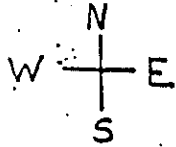


## AFTER A TORNADO

- Turn on radio or television to get the latest emergency information.
- Stay out of damaged buildings. Return home only when authorities say it is safe.
- Use the telephone only for emergency calls.
- Clean up spilled medicines, bleaches or gasoline or other flammable liquids immediately. Leave the building if you smell gas or chemical fumes.
- Take pictures of the damage—both to the house and its contents—for insurance purposes.

# FIRE ESCAPE PLAN

In case of fire, evacuate the building as follows;



North exit for rooms: 101, 102, 103, 201, 204, 206, 207.

Southeast exit for rooms: 109, 202, 203.

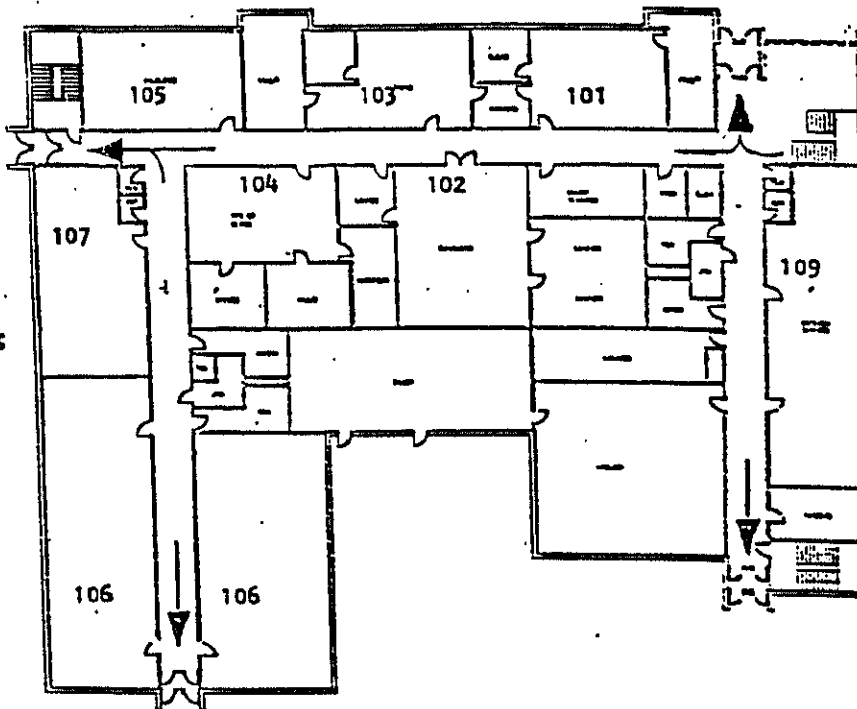
West exit for rooms: 104, 105, 107, 208, 210, 211, 212, 215.

Southwest exit for rooms: 163, 106.

Use stairway nearest your exit. Do not use the elevator. When outside move away from the building. If your exit is blocked, use an alternate exit nearest you.

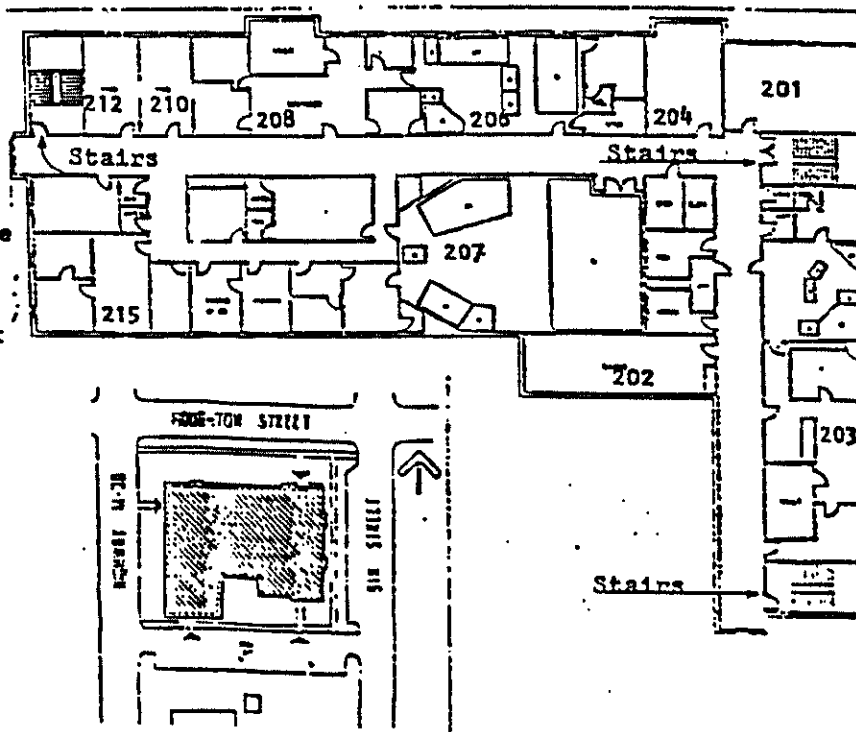
## FIRST FLOOR PLAN

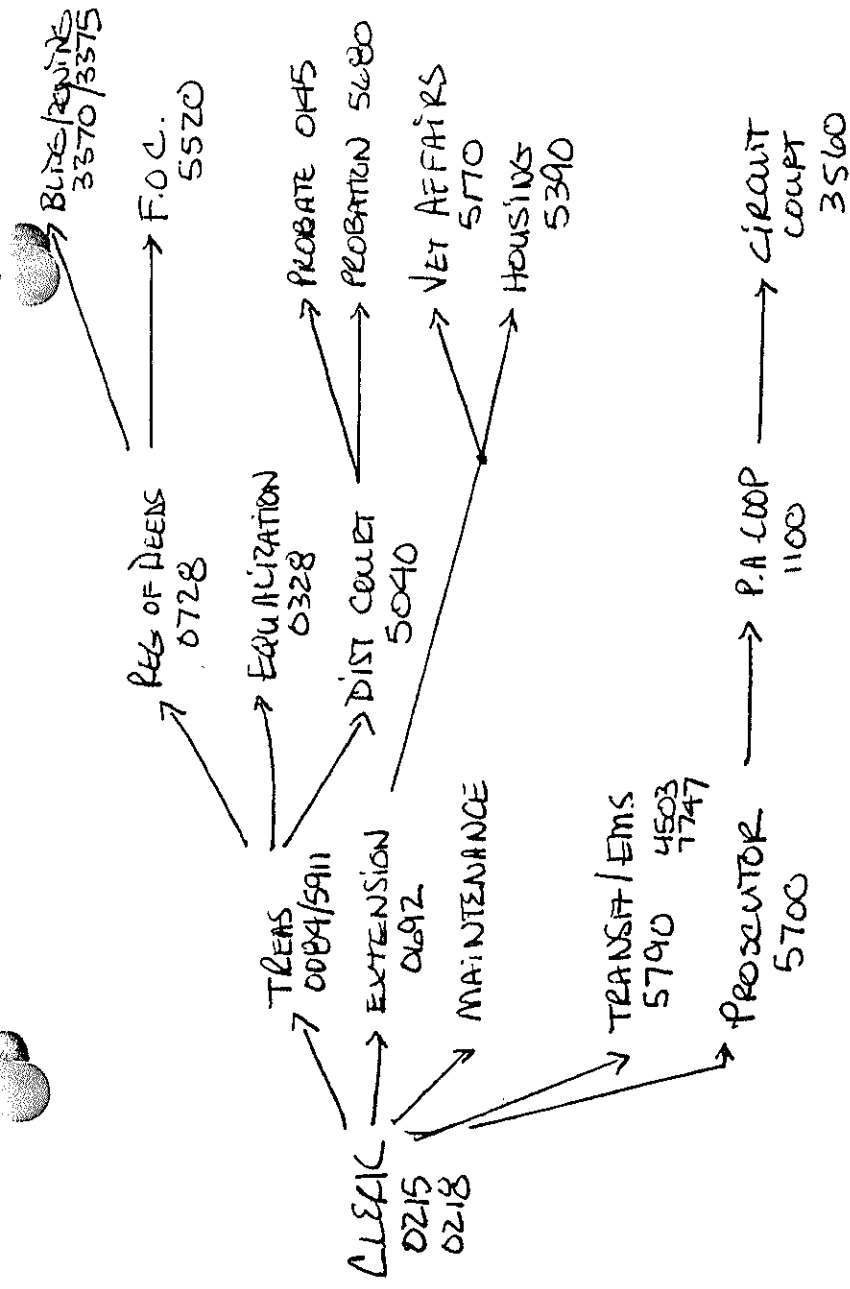
- 101 - County Clerk
- 102 - Commissioner's
- 103 - Treasurer
- 104 - Reg. of Deeds
- 105 - Equalization
- 106 - Friend of Court
- 107 - Zoning & Building
- 109 - Prosecuting Atty.



## SECOND FLOOR PLAN

- 201 - Law Library
- 204 - Public Transit
- 207 - Circuit Court
- 210-212 - District Office
- 215 - District Court
- 206 - Dist. Court Clerk
- 203 - Probate Court
- 202 - Probate office





SEVERE WEATHER NOTIFICATION CONTACT GRID